

April



Order flowers at edgelive.org/shop from April 1-14. Drive through pickup is May 8th (1-4 pm) at The Edge. Perfect for Mother's Day gifts! Proceeds benefit youth ministry.



Sun	Mon	Tue	Wed	Thu	Fri	Sat
 <p>Please RSVP for youth group & other events at edgelive.org</p>				<p>1 Flower Sale Fundraiser begins!</p> 		
<p>4</p> <p>Happy Easter</p> 	5	<p>6 Coffee House 2-5pm</p>	<p>7</p> 	<p>8 Coffee House 2-5pm</p>	<p>9</p> <p>Come study in the atrium & have a hot beverage!</p> 	10
<p>11 Club 56 & MS The Edge 4:30-6pm</p> <p>HS The Edge 6:30-8:30pm</p>	12	<p>13 Coffee House 2-5pm</p>	<p>14 HS Bible Study 12-1:30 pm</p> <p>Last day to order flowers!</p> 	<p>15 Coffee House 2-5pm</p>	16	17
<p>18 Club 56 & MS The Edge 4:30-6pm</p> <p>HS The Edge 6:30-8:30pm</p>	19	<p>20 Coffee House 2-5pm</p>	<p>21 HS Bible Study 12-1:30 pm</p>	<p>22 Coffee House 2-5pm</p>	<p>23 Club 56 Girls' Night 6-8 pm</p> 	24
<p>25 Club 56 & MS The Edge 4:30-6pm</p> <p>HS The Edge 6:30-8:30pm</p>	26	<p>27 Coffee House 2-5pm</p>	<p>28 HS Bible Study 12-1:30 pm</p>	<p>29 Coffee House 2-5pm</p>	30	

EXTRA INFORMATION

WEEKLY EVENTS

SUNDAY NIGHTS

Club 56 4:30-6pm
For all 5-6th graders.
Meet at The Edge.

MS The Edge 4:30-6pm
For all 7-8th graders.
Meet at Gym entrance.

HS The Edge 6:30-8:30pm
For all 9-12th graders.
Meet at Gym entrance.

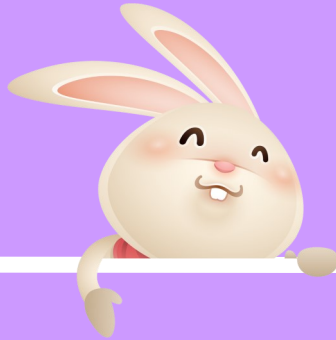
HS BIBLE STUDY: Wed. 12-1:30pm
Dive deeper into the Bible with Joy & Jeremy! Meet in The Edge with masks. Pancakes served for lunch.



Contact Info

Jeremy Hannich: (734) 474-1607
youthguy@dexterumc.org

Joy Hook: (734) 660-1798
joy@dexterumc.org



COVID Plan

For current plans, make sure you get our weekly emails. Sign-up @ edgelive.org at the bottom of the homepage. As a rule we will always wear masks & spread out. We are keeping groups small & separate as safety is a primary concern.

COMING UP

MS & HS Coffee House - Tuesdays/Thursdays 2-5pm

7th-12th graders: Work on homework at the church, distanced around the atrium. We'll provide lattes & other hot drinks. For questions contact Joy at (734) 660-1798.

Club 56 Girls' Night - Friday, April 23, 6-8 pm

5th & 6th grade girls have fun hanging out for the evening at The Edge. RSVP at edgelive.org

Flower Sale Fundraiser - April 1-14 at edgelive.org/shop.

Pickup is Saturday, May 8th, at The Edge from 1-4 pm. Perfect gifts for Mother's Day! All proceeds benefit Edge youth ministries and missions.



DEXTER UNITED METHODIST CHURCH

Find us on social media!



The Edge - DUMC



@theedgedumc



edgelive.org